

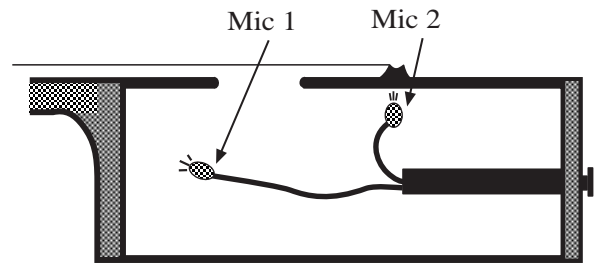
Professional Series 2Mic

Model-5 Mounting Instructions

Detailed installation videos are available at www.miniflexmic.com (select "installation")

Summary: Model-5 is a phantom powered, fully balanced microphone (T-R-S). It has two microphones mounted on separate goosenecks that are connected to a single endpin-output jack. Once mounted into the tailblock, the microphones will be completely suspended inside the body of the guitar. Mic 1 should be positioned near the soundhole, and Mic 2 approximately underneath the bridge. See Drawing #1. Mic placement for the 2Mic is not nearly as critical compared to single mic systems; however, guitarists should feel free to experiment with different mic placements to find the best amplified sound quality.

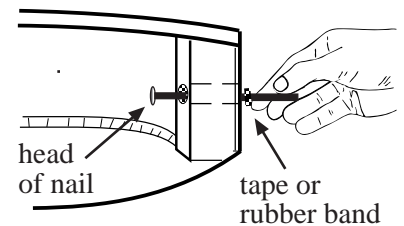
Drawing #1



Installation:

Measure the tailblock thickness: Drawing #2 shows a nail with the head being drawn against the inside edge of the tailblock and a rubber band or piece of tape marking the outside edge of the guitar. Transfer this distance to the stop nut on the jack.

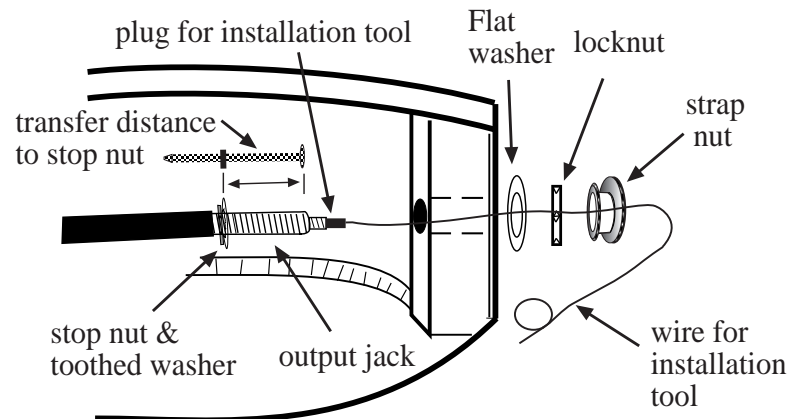
Drawing #2



Stop nut adjustment: Adjust the stop nut/washer on the barrel of the jack to match the thickness of the tailblock so:

- the jack will be securely mounted to the guitar, and
- the end of the jack passes through the strap nut so that the plug from an output cable will fully engage the jack. See Drawing #3

Drawing #3



Installation tool (included with your 2Mic) Drawing #3 shows the 2Mic endpin output jack being installed into the tail block of a guitar using the installation tool as a guide.

Additional Information:

- **Phantom Power:** The Model-5 requires 9V - 48V of phantom power to operate correctly.

- **P.A. systems:** A high quality P.A. system will provide the highest possible sound quality and feedback control with your 2Mic. For P.A. systems, you will need a TRS cable with male XLR end, (included).

- **Feedback:** The Model-5 2Mic will deliver more volume without feedback than any single mic system. But, feedback can sometimes occur when the 2Mic is used in small rooms, through electric guitar & bass amps, or when played at extremely high volumes (rock band sound levels). All microphones, including the 2Mic like lots of air, and need a high quality P.A. system, and a good room to perform at their best.